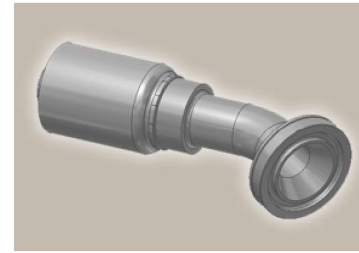
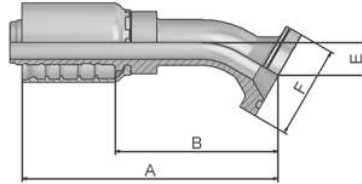


6E ISO 6162-2 Flange 30° Elbow

SFS 30°
(42.0 MPa/ 6000 psi)



| Part Number | Hose I.D. | | | | Flange Inch | A mm | B mm | E mm | F mm |
|-------------|-----------|-------|------|------|----------------|---------|---------|---------|---------|
| | DN | Inch | Size | mm | | | | | |
| 16E77-12-12 | 19 | 3/4 | -12 | 19,1 | 3/4 | 121 | 75 | 16 | 41 |
| 16E77-16-12 | 19 | 3/4 | -12 | 19,1 | 1 | 122 | 76 | 16 | 48 |
| 16E77-16-16 | 25 | 1 | -16 | 25,4 | 1 | 136 | 82 | 19 | 48 |
| 16E77-20-16 | 25 | 1 | -16 | 25,4 | 1 1/4 | 149 | 95 | 19 | 54 |
| 16E77-20-20 | 31 | 1 1/4 | -20 | 31,8 | 1 1/4 | 175 | 111 | 24 | 54 |
| 16E77-24-24 | 38 | 1 1/2 | -24 | 38,1 | 1 1/2 | 190 | 123 | 30 | 64 |
| 16E77-32-32 | 51 | 2 | -32 | 50,8 | 2 | 223 | 145 | 32 | 79 |

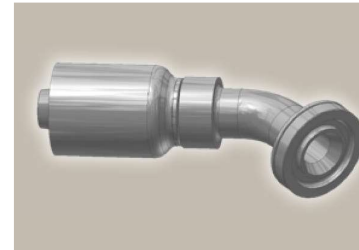
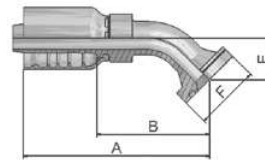
SAE flange halves see in section Eb.

Fittings with standard O-ring seals can be used for temperatures from -40 °C up to +105 °C.

O-rings see section Eb. Special O-rings are available on request.

6F ISO 6162-2-Flange 45° Elbow – Heavy Series

ISO 12151-3 – E45-S – SFS 45°
(42.0 MPa/ 6000 psi)



| Part Number | Hose I.D. | | | | Flange Inch | A mm | B mm | E mm | F mm |
|-------------|-----------|-------|------|------|----------------|---------|---------|---------|---------|
| | DN | Inch | Size | mm | | | | | |
| 16F77-8-8 | 12 | 1/2 | -8 | 12,7 | 1/2 | 79 | 44 | 19 | 32 |
| 16F77-12-8 | 12 | 1/2 | -8 | 12,7 | 3/4 | 85,8 | 51 | 26 | 41 |
| 16F77-8-10 | 16 | 5/8 | -10 | 15,9 | 1/2 | 105 | 66 | 26 | 32 |
| 16F77-12-10 | 16 | 5/8 | -10 | 15,9 | 3/4 | 104 | 66 | 26 | 41 |
| 16F77-16-10 | 16 | 5/8 | -10 | 15,9 | 1 | 105 | 66 | 26 | 48 |
| 16F77-12-12 | 19 | 3/4 | -12 | 19,1 | 3/4 | 116,2 | 70 | 26 | 41 |
| 16F77-16-12 | 19 | 3/4 | -12 | 19,1 | 1 | 116 | 70 | 26 | 48 |
| 16F77-12-16 | 25 | 1 | -16 | 25,4 | 3/4 | 132 | 78 | 32 | 41 |
| 16F77-16-16 | 25 | 1 | -16 | 25,4 | 1 | 141 | 87 | 32 | 48 |
| 16F77-20-16 | 25 | 1 | -16 | 25,4 | 1 1/4 | 142 | 88 | 32 | 54 |
| 16F77-16-20 | 31 | 1 1/4 | -20 | 31,8 | 1 | 154 | 90 | 38 | 48 |
| 16F77-20-20 | 31 | 1 1/4 | -20 | 31,8 | 1 1/4 | 167 | 104 | 38 | 54 |
| 16F77-24-20 | 31 | 1 1/4 | -20 | 31,8 | 1 1/2 | 173 | 110 | 44 | 64 |
| 16F77-20-24 | 38 | 1 1/2 | -24 | 38,1 | 1 1/4 | 184 | 117 | 44 | 54 |
| 16F77-24-24 | 38 | 1 1/2 | -24 | 38,1 | 1 1/2 | 192 | 125 | 44 | 64 |
| 16F77-32-24 | 38 | 1 1/2 | -24 | 38,1 | 2 | 192 | 125 | 44 | 79 |
| 16F77-32-32 | 51 | 2 | -32 | 50,8 | 2 | 218 | 141 | 56 | 79 |

SAE flange halves see in section Eb.

Fittings with standard O-ring seals can be used for temperatures from -40 °C up to +105 °C.

O-rings see section Eb. Special O-rings are available on request.

Approved **fitting series** for hose types, depending on size:

| | | | | | | | | | | | | | | | |
|-----------|--------|--------|-------|-----|-------|-------|-----|-------|-------|-----|-------|-------|-------|------|-----|
| 77 | 387 | 387ST | 387TC | 487 | 487ST | 487TC | 787 | 787TC | 787ST | 797 | 797TC | 797ST | 797RH | SX42 | ... |
| | SX42LT | SX42TC | | | | | | | | | | | | | |